

Sublimation

Printer

for heat transfer paper

热转印纸印花机

3 Print-head Configurations Available 提供三种喷头配置

Dual Heads
双喷头

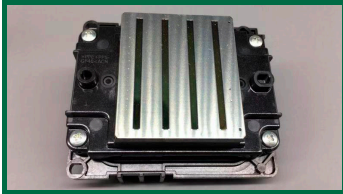
High Speed
速度快

Super Reliable
超稳定

Long Running
不间断打印

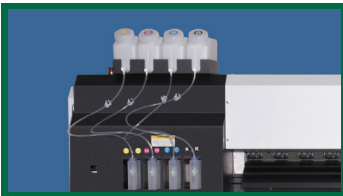


● Features 特点



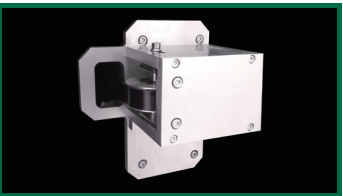
Equipped Epson DX8/4720 Head
Latest Epson 4720 printhead boost the print speed into the sky. Flagship model DX8 reduce maintenance cost dramatically

装备爱普森DX8或4720喷头
采用最新技术，打印速度飞快



Continuous Ink Supply System
Simplify the printing process. No need to add ink frequently

标准大供墨系统
连续大量供墨，能够长时间打印



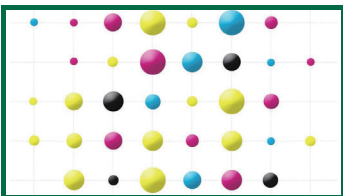
Aluminum Moulding Frame
Increase machine accuracy and extend machine durability

铝型材开模
提升机器运行精度并延长使用寿命



Free ICC Profiles
The SinoColor support provides a batch of free icc profiles for different major media and inks

标配多种ICC配置文件
节省配置时间，以便尽快进入生产



Variable Dot Technology
Variable dot produces droplets of different sizes for precise, high resolution graphics, smooth gradations and very good contrast
可变墨滴技术
平滑的渐变成就最佳的图像质量



● Specification 参数

Model No.	型号	WJ-740C	WJ-740P
Printhead	喷头	Dual Epson DX8	Three Epson 4720
Resolution	精度	1440dpi max	
Media 耗材	Size 色彩	1.8 meter	
	Types 种类	Heat Transfer Paper 热转印纸	
Speed 速度		32 sqm/h (4 pass)	70 sqm/h (3 pass)
		24 sqm/h (6 pass)	36 sqm/h (6 pass)
		18 sqm/h (8 pass)	
Ink 墨水	Color 色彩	CMYK	
	Type 墨水	Sublimation Ink / Waterbased Dye Ink 升华墨水/水性染料墨水	
	Capacity 墨瓶	Low ink detector, Auto Ink Supply System 低油墨检测器、自动墨水供应系统	
Cleaning	清洗	Automatic Cleaning, Anti-Clogging Flash Function & Capping System	
Cleaning	清洗	自动清洗、闪喷、封喷头	
Heating System	加热系统	Pre/Middle/Post Heater Equipped 配备前/中/后三段加热	
Drying System	环境	Equipped	
Rip Software	软件	MainTop / PhotoPrint / Wasatch	
Interface	接口	USB2.0	
Power	电源	AC 220V, 50/60Hz	
Size & Weight	Machine 机器	L2960mm W800mm H1270mm / 280KG	
	Packing 包装	L3060mm W900mm H700mm / 400KG	

Specifications are subject to change without notice. 以上参数可能随机器版本改变，请以厂家最新数据为准。