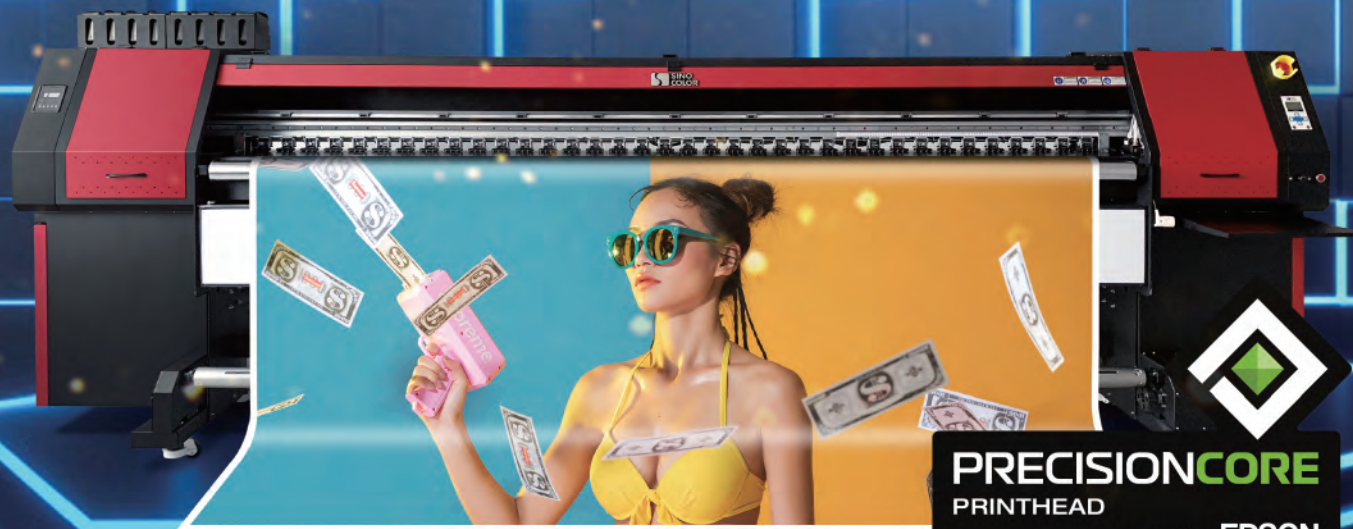


Eco Solvent Printer

Powered by Epson PrecisionCore

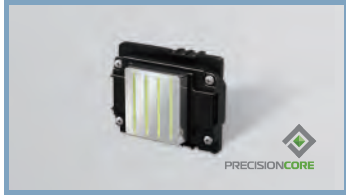
3.2米爱普生i3200写真机

3.2m with 4 Epson i3200-E Heads



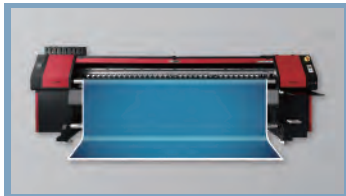
PRECISIONCORE
PRINTHEAD
powered by **EPSON**

● Features 特点



Machine is equipped with Epson i3200 printhead, powered by advanced PrecisionCore technology, born for speed and resolution.

爱普生i3200 喷头，采用PrecisionCore技术，为速度而生



Front and middle and rear heating system, front drying fan are standard equipped to help dry the printed material fast.

配备前中后三段加热和前置冷却风扇



Italian Megadyne belt. High quality, durable. Guarantee the smooth movement of carriage.

意大利麦高迪皮带，经久耐用，保障小车的稳定运行



Anti-collision system is equipped to protect the printhead and carriage all the time

标配防撞装置，支持中断处续打



One-time molding aluminum beam that ensure the high accuracy of each carriage movement.

一次开模铝制横梁，保障小车高精度打印

- ★ New look has heavier, larger structure, and wider printing platform
新造型更加厚重大气，更宽的打印平台
- ★ Tension type media take up system with inflatable bar is available (optional)
张力收卷可选
- ★ Optional infrared heater for drying prints quickly
选配红外加热装置，画面极速烘干
- ★ Integrated temperature controller
一体式温控仪



● Specification 参数

Model No.	型号	SJ-3200S	
Printing Head	打印喷头	4 × Epson i3200 Heads	
Resolution	打印精度	2400 dpi MAX	
Media 耗材	Width 耗材宽度	3200 mm MAX	
	Type 耗材种类	Flex banner, vinyl, one way vision, pp paper, photo paper, mesh, canvas, etc 灯布、车贴、单透、PP纸、相纸、油画布等等	
Speed 速度	Draft 草图模式	100 m ² /h	
	Standard 标准模式	70 m ² /h	
	Quality 精细模式	35 m ² /h	
Ink 墨水	Type 墨水类型	Eco Solvent Ink	
	Color 墨水颜色	C M Y K	
Drying System	干燥系统	Front and middle and back heating system and front cooling fan are standard equipped	
Cleaning	清洗系统	Automatic Cleaning, Anti-Clogging Flash Function & Capping System 自动清洗、闪喷、封喷头	
Feed & TakeUp	收放布	Automatic Media Feeding (Standard) & Take up System (Optional) 自动收放布	
Rip Software	操作软件	Maintop (Standard) / Photoprint (Optional)	
Connector	连接方式	USB 3.0	
Power	电力消耗	AC 110V / 220V ± 5%, 16A, 50/60Hz ± 1, 2000W MAX	
Size 尺寸	Machine 机器尺寸	L4680 × W1190 × H1680 mm	
	Packing 包装尺寸	L4780 × W1020 × H1650 mm	
Weight 重量	Machine 机器重量	750 KG	
	Packing 机器重量	950 KG	

Specifications are subject to change without notice. 以上参数可能随机器版本改变，请以厂家最新数据为准。